

The Challenge:

Grand Junction High School, a cornerstone of the community since 1891, faced a pressing challenge: its aging infrastructure demanded extensive renovations to address escalating maintenance costs and ensure a conducive learning environment. The project required innovative solutions to tackle issues such as indoor air quality, energy efficiency, and structural integrity.

The Journey:

The project encountered a significant hurdle in balancing significant indoor air quality requirements with the need to minimize air noise disruptions for students. To overcome this obstacle, the design team opted for a strategic approach, leveraging the rooftop space for housing large ducts and sound attenuators. This decision optimized interior space while minimizing construction costs, demonstrating the team's commitment to creative problem-solving.

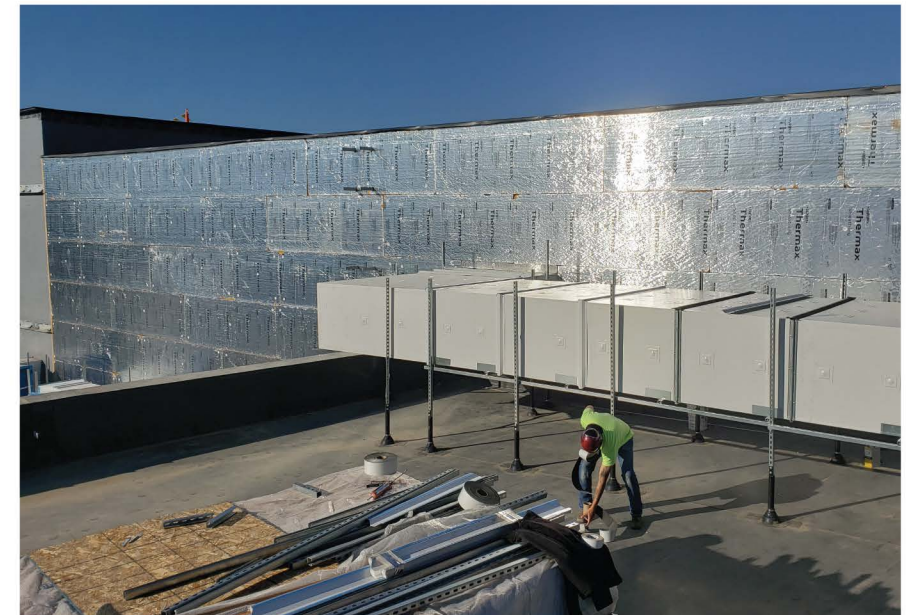
Traditional exterior duct installations often fell short, resulting in deterioration and energy losses over time. CFM Company intervened with Thermaduct, a product offering labor-saving benefits, superior insulation, and weatherproof. By integrating Thermaduct with sound attenuators, the team provided a holistic solution that addressed both weather protection and noise control challenges.

The Solution:

CFM Company delivered a comprehensive solution that tackled installation challenges and weatherproofing concerns head-on. By offering integrated products and excellent customer service, CFM Company distinguished itself in the industry, continuously proving to be an innovative and trusted industry leader.

Feedback from the contractor highlights the success of CFM Company's solution. Through meticulous planning, seamless coordination, and dedication to quality, CFM Company has laid the groundwork for long-term success and client satisfaction, affirming its commitment to delivering excellence.

In conclusion, the transformation of Grand Junction High School represents more than a project—it's a testament to resilience, innovation, and community engagement. CFM Company's pivotal role in overcoming challenges and delivering impactful solutions not only revitalized the school's infrastructure but also strengthened its ties to the community.



Project Details:

OWNER: Mesa County School District 51

ARCHITECT: Blythe Group + Co.

ENGINEER: Bighorn Consulting Engineers, Inc.

GENERAL CONTRACTOR: FCI Constructors, Inc.

MECHANICAL CONTRACTOR: Grand Mesa Mechanical, Inc.